

LEASEHOLD



Maisonette

83 KASHMIR ROAD,  
ST MATTHEWS,  
LEICESTER, LE1 2NB

£135,000

#### FEATURES

- Second Floor Maisonette
- Kitchen
- Two Bedrooms
- Off Road Parking Bays
- Entrance Hall
- Lounge / Diner
- Bathroom
- Shared Balcony



 **SETHS**

# 2 Bedroom Maisonette located in Leicester

Seths are delighted to present this well maintained two bedroom, second floor Maisonette situated in Saint Matthews within walking distance of Taylor Road Primary School and Leicester City Centre. In brief the property comprises of an entrance hallway, lounge / diner, kitchen, two double bedrooms and a bathroom. The property also benefits from uPVC double glazing, gas central heating and a shared balcony.

Viewings are by appointment only.

Call us on

0116 266 9977

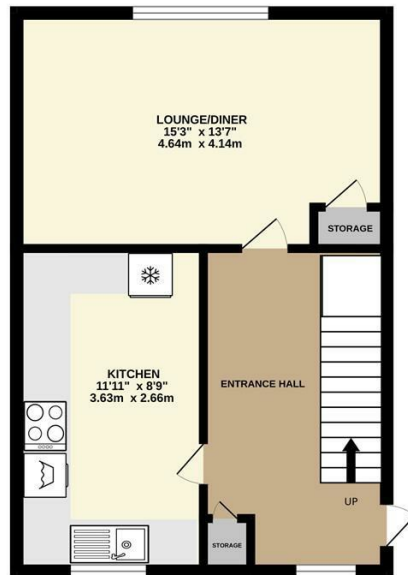
[sales@seths.co.uk](mailto:sales@seths.co.uk)

[www.seths.co.uk](http://www.seths.co.uk)

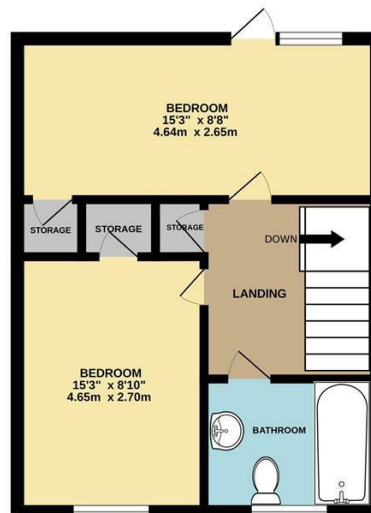
Council Tax Band

A

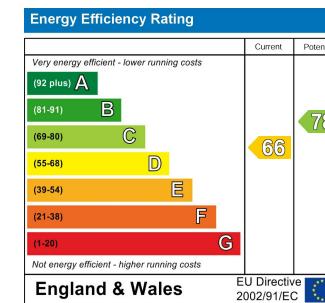
SECOND FLOOR



THIRD FLOOR



Whilst every attempt has been made to ensure the accuracy of the floorplan contained here, measurements of doors, windows, rooms and any other items are approximate and no responsibility is taken for any error, omission or mis-statement. This plan is for illustrative purposes only and should be used as such by any prospective purchaser. The services, systems and appliances shown have not been tested and no guarantee as to their operability or efficiency can be given.  
Made with Metropix ©2023



Agents Note: Whilst every care has been taken to prepare these particulars, they are for guidance purposes only. All measurements are approximate and are for general guidance purposes only and whilst every care has been taken to ensure their accuracy, they should not be relied upon and potential buyers are advised to recheck the measurements.

